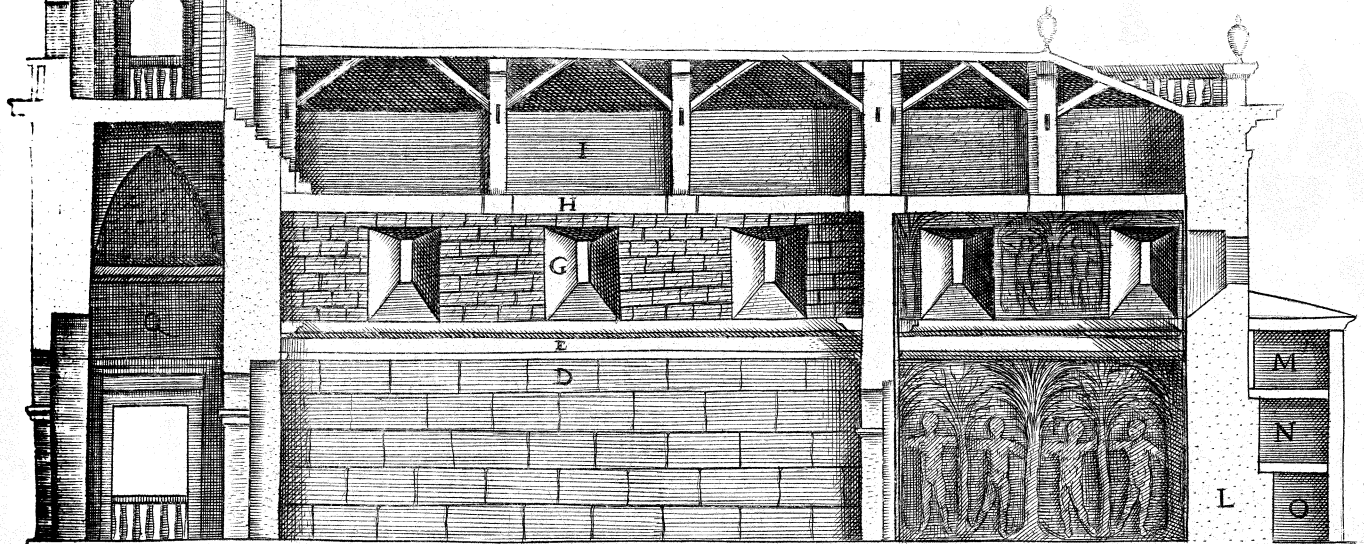
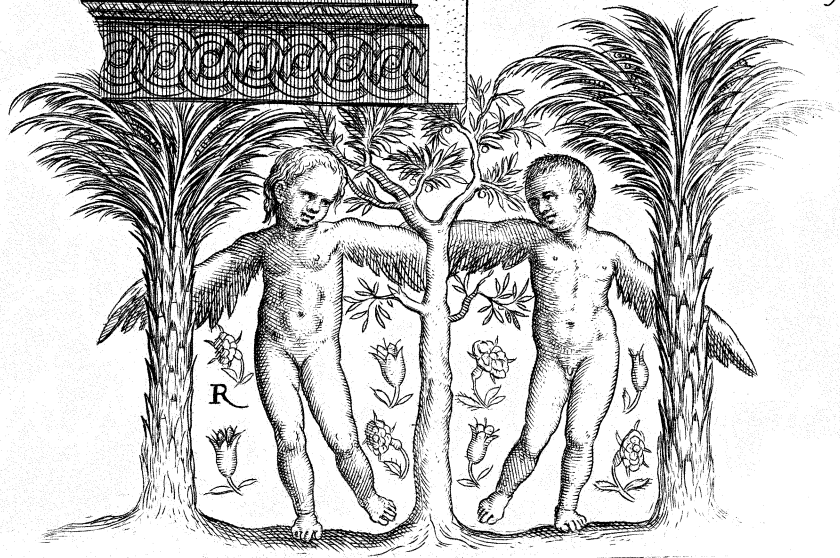
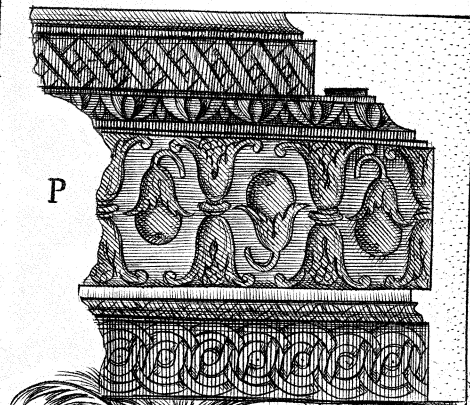
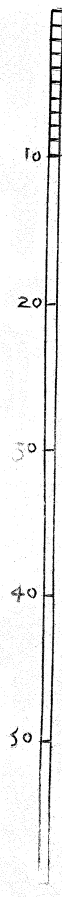
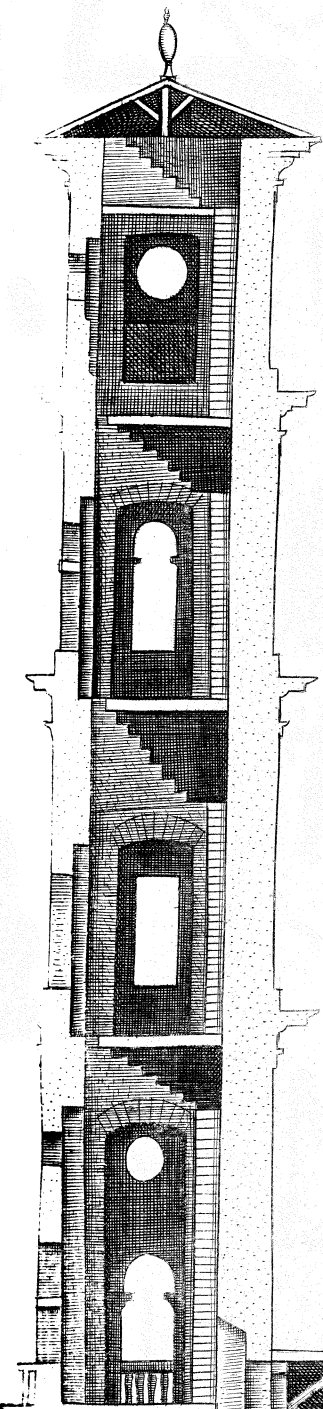


A. Porticus Vel aVLAM  
 B. Sanctum  
 C. Sanctum sanctorum  
 D. Murus inferior nudus  
 E. Coronis trimembris  
 F. Ornamentum muri ex ligno  
 auro obducto.

G. Fenestra  
 H. Prioris contignationis locus  
 I. Locus vacuus et obscurus inter  
 contignationem et tectum.  
 L. Muri crassitudo et reductus.  
 M. Tres contignationes cellarum.  
 N. Tres contignationes cellarum.  
 O. P. Coronidis trimembris specimen  
 Q. Portici sciographia  
 R. Ornamenti interioris specimen.



SACRÆ AEDIS SCIOGRAPHIÆ PARS.

